

PB Equipment & Parts, LLC

Marine Division

www.pb-equiparts.com

Contact: sales@pb-equiparts.com



PB Equipment and Parts, LLC

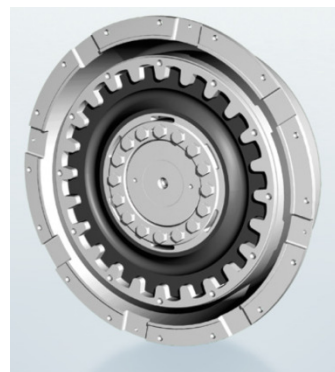
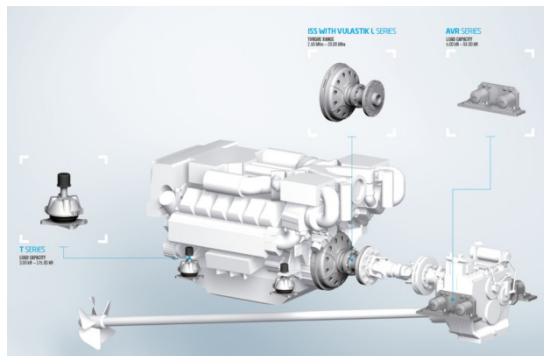
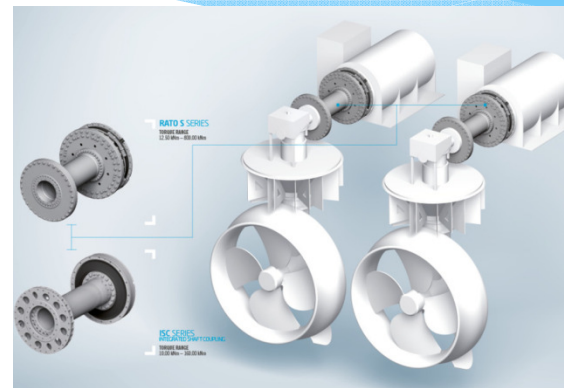


5767 NW 115th Ct # 104
Miami, FL 33178

Management: jpena@pb-equiparts.com
Sales: sales@pb-equiparts.com
Tel: 786-797-7477
Fax: 305-597-4074
www.pb-equiparts.com

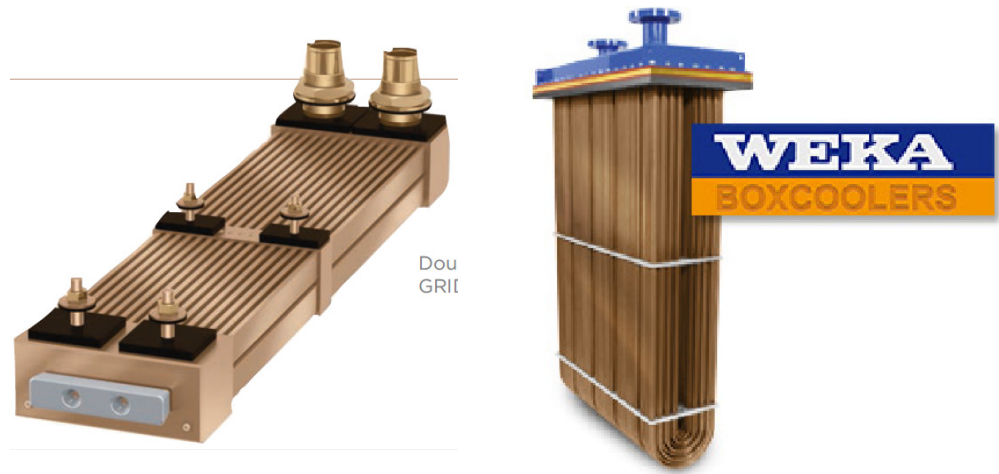
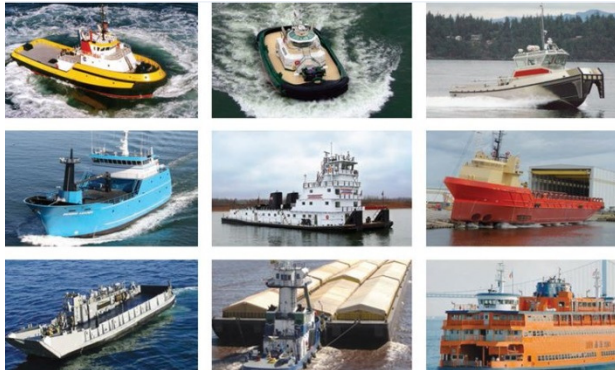
Flexible Couplings and Cardan Shafts

- * Highly flexible couplings
- * Cardan shafts couplings
- * Clutches
- * Joint shaft couplings
- * Resilient mounts
- * Shock mounts



Grid Coolers, Box Coolers, Remote Heat Exchangers

- * Grid coolers and Box coolers for all types of marine applications



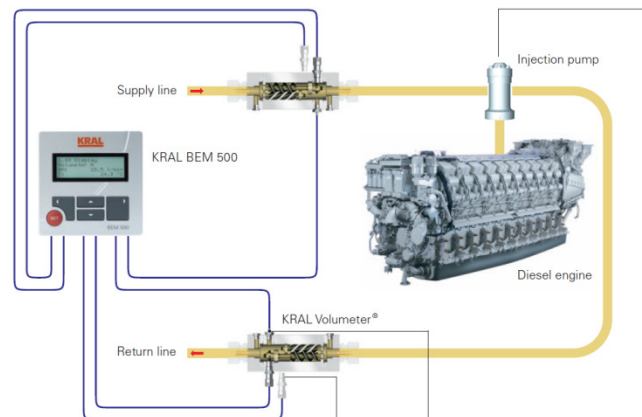
Batteries and Battery Chargers

- * Marine grade batteries (sealed type AGM)
- * Battery chargers with regulatory agency approvals upon request



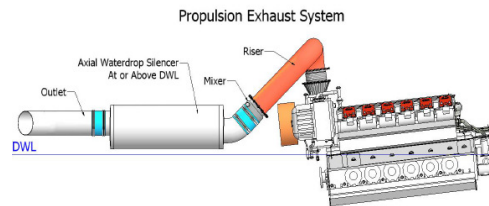
Fuel Consumption Solutions for Marine Diesel Engines

- * Positive displacement flow meter
- * Mass flow meter (Coriolis type)
- * Multi-engine systems
- * High system accuracy (measurement accuracy of 0.1%)



Exhaust System Solutions

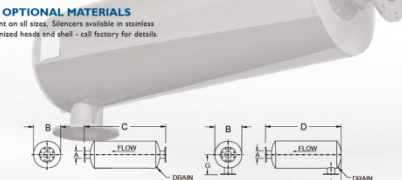
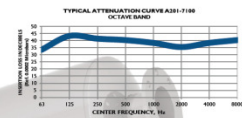
- * Exhaust silencers (cylindrical, disc, Simline, compact) with or without thermal wrap installed from factory
- * Wet exhaust system solutions
- * Mounting kits



APPLICATION
Designed for applications where an acute attenuation is mandatory. This model performs the work of two silencers in series. Recommended for use in highly critical environments requiring extreme exhaust noise attenuation. For Horizontal applications. If used in vertical application contact factory.

CONSTRUCTION
Heavy duty steel construction. Sizes 4" and above come standard with ANSI Flanged connections. Additional connections available. Call factory for details.

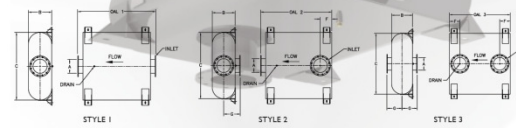
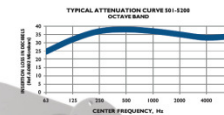
FINISH AND OPTIONAL MATERIALS
High heat black paint on all sizes. Silencers available in stainless steel or with slumbeared heads and shell - call factory for details.



APPLICATION
Space saving design specifically engineered to provide a high degree of attenuation in a space saving design. For applications where ambient noise levels are relatively low. Excellent for use in enclosures, trailers, marine, or any application where space is extremely restricted.

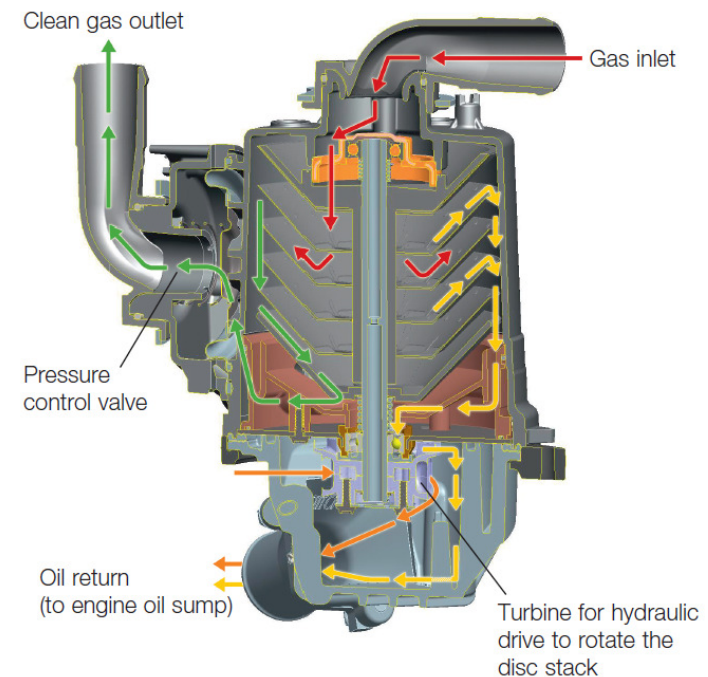
CONSTRUCTION
A critical grade Slim Line silencer without compressed internal packing. Comes standard with bottom mounted brackets with the option of top mounted brackets.

FINISH AND OPTIONAL MATERIALS
Heavy duty steel construction with a high heat black paint. Flanged inlet and outlet standard. Additional connections, as well as flush mounted inlets, are available. Stainless steel available. Call factory for details.



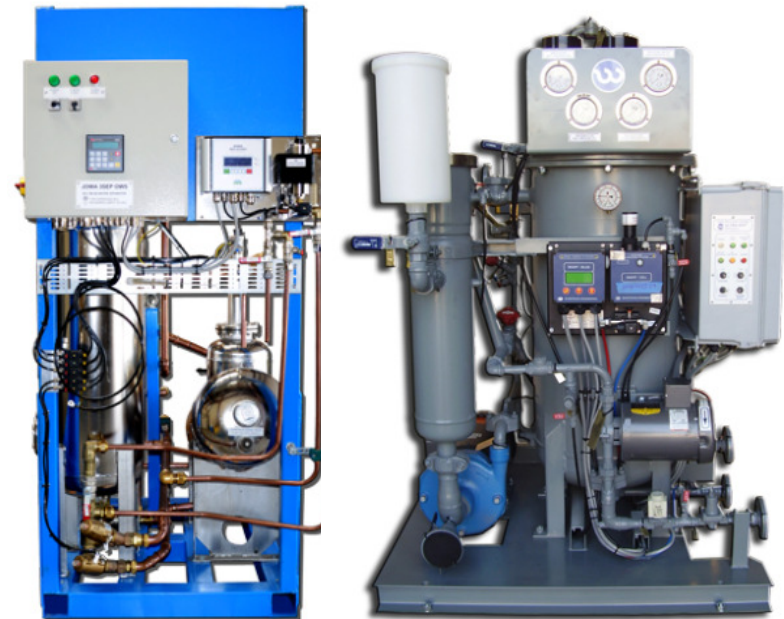
Crankcase Filtering Solutions

- Oil mist separators / High performance disc stack technology with cleaning efficiency >98%
- Protects turbocharger and intercooler, hence maintaining a high performing engine and prolonging the engine life
- “Fit & Forget” – No service throughout its lifetime
- Minimizes engine oil consumption, due to oil return and reuse of drive oil
- No disposables or recycling – eliminates the need for replacement filters
- Actively extracts gases from the crank case – no pressure drop
- No external power to drive the separator



Oily Water Separators

- Type approved in accordance with IMO MEPC 107(49)
- Approvals: DNV,CCS,USCG & RMRS
- Treated water below 15ppm
- "Plug and play", easy installation
- Skid design, small footprint
- High quality materials and parts
- Tanks made of stainless steel, AISI 316L
- Can easily be connected to an Emulsion breaking unit for less than 5ppm applications



Centrifuge Solutions

- GEA Westfalia centrifuges
- Treatment and conditioning of fuel oil
- Treatment of bilgewater
- Treatment of lube oil and hydraulic oil
- Treatment of sludges containing oil and water
- Sea water desalination
- GEA Spare Parts

